



INNOVATIVE WATER TRUCK SOLUTIONS



100|80
XHD

100X80XHD Series

DIRECT DRIVE WATER PUMP

100.80 XHD



100X80XHD Series Water Pump

The **100X80XHD water pump** is designed and manufactured in Australia specifically for water trucks. 10080XHD pumps offer optimum performance for dust suppression applications. Robust designs ensure maximum service life in the harshest conditions.

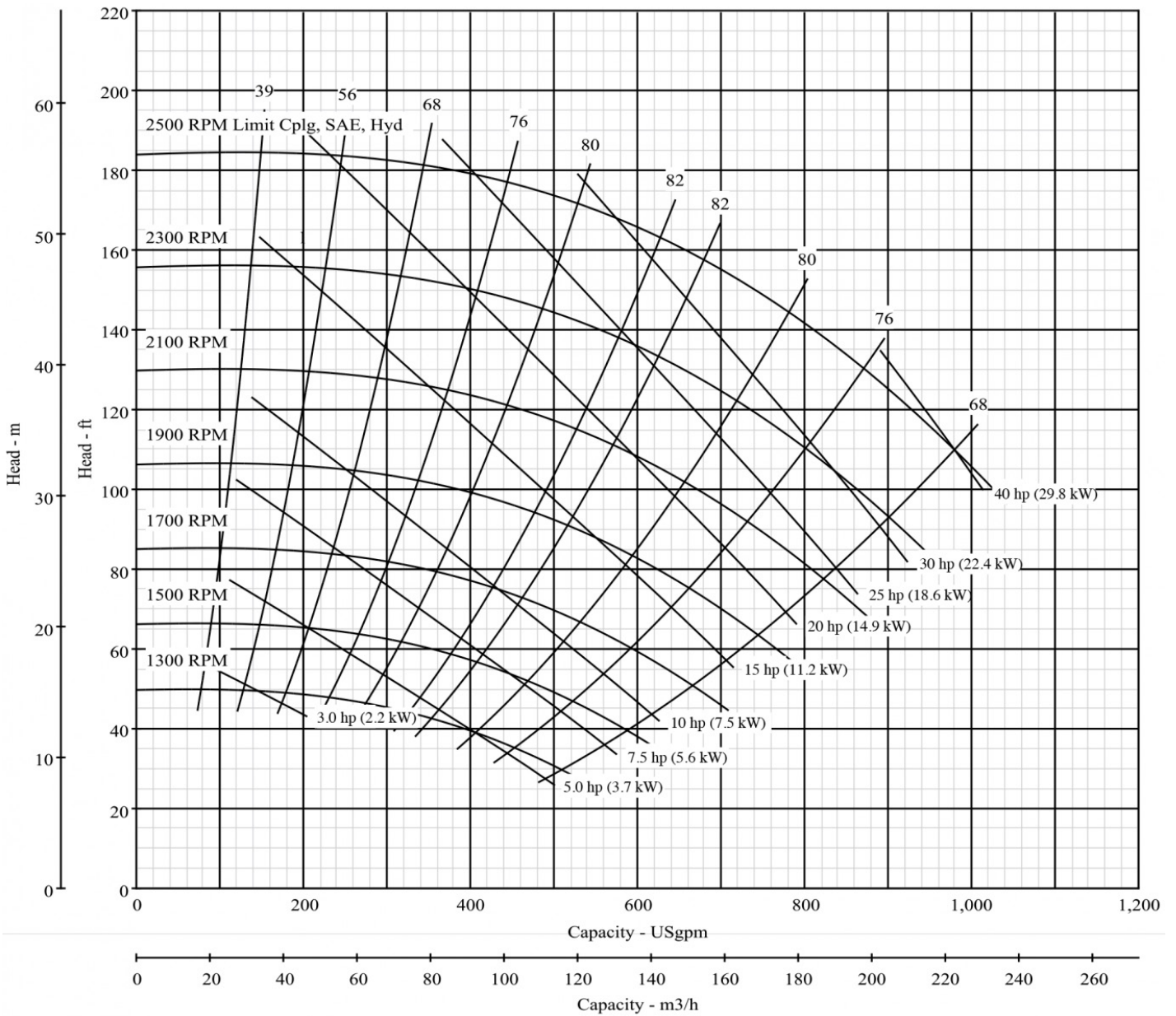
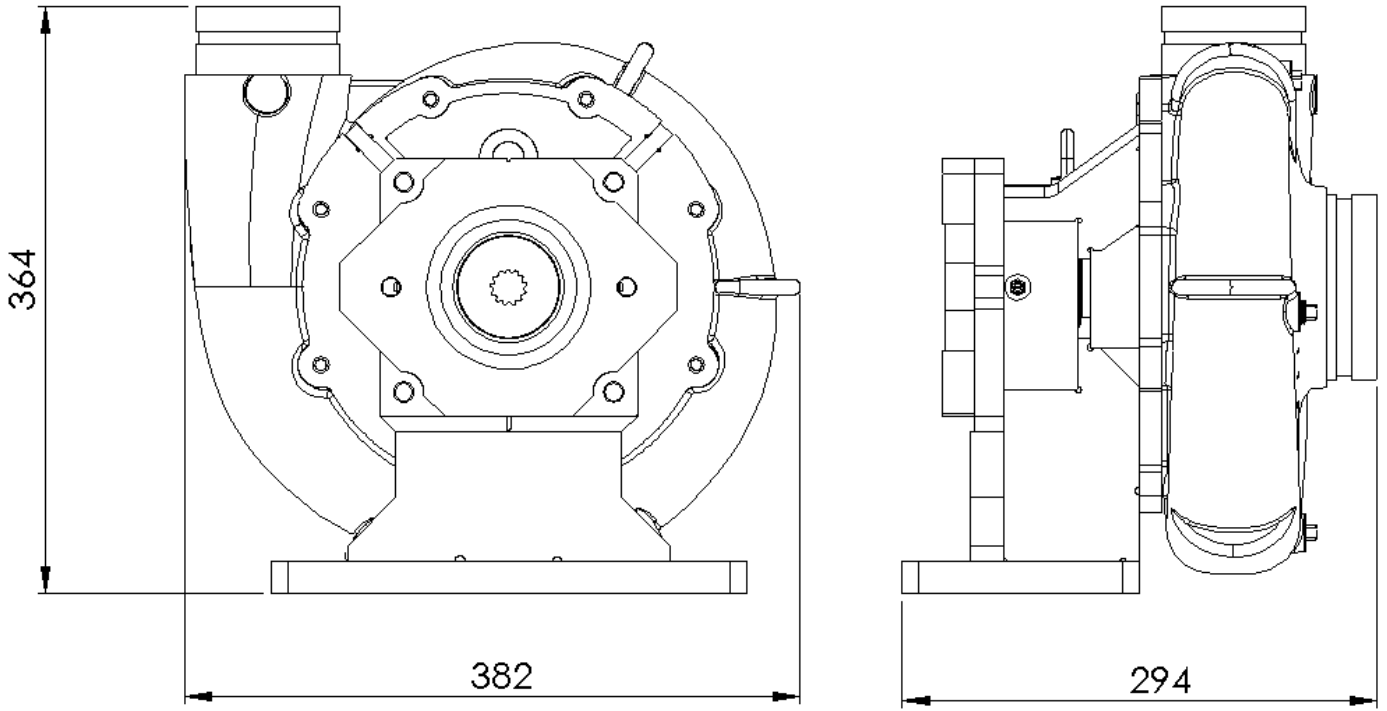
An integrated precision machined SEA-B mount enables precise alignment of a hydraulic motor. Various motors can be supplied to suit your requirements.

FEATURES

Cast Iron Body - Cast Iron Impeller - Stainless Steel or 4140 Shaft - Robust Type 502 Mechanical Seal - Direct Drive and Hydraulic Options - Grooved Inlet and Outlet - Local support and parts availability.

SPECIFICATIONS	
Inlet	100mm (4") Roll Groove
Outlet	80MM (3") Roll Groove
Max Speed	2500 RPM
Hydraulic Motor Mount	SEA-B 2 Bolt
Motor Shaft	7/8" with 1/4" Key or 13T Spline
Shaft Material	High tensile 1040 Or stainless option
Impeller Material	Cast Iron, Stainless Option
Frame Material	Grade 250 Carbon Steel

PERFORMANCE	
Max Power	40HP 30KW
Max Flow	43PSI @ 3785LPM 30KW
Max Pressure	80PSI @ 1000 LPM 15KW
Max Efficiency	70PSI @ 2450LPM 23KW






Check this cool video showing how we manufacture the water pump frame.

How we make our water pump frame. T-Rex XHD Water Pump

Watch later Share

See How It's Made!




R&L Jones Engineering Pty Ltd
 Trading As T-Rex Water Trucks
 2 Ayton Street Sunshine North, VIC 3020
 ACN|ABN: 34 006 805 527
 Call Us at **1300 558 111**
info@trexwatertrucks.com.au